

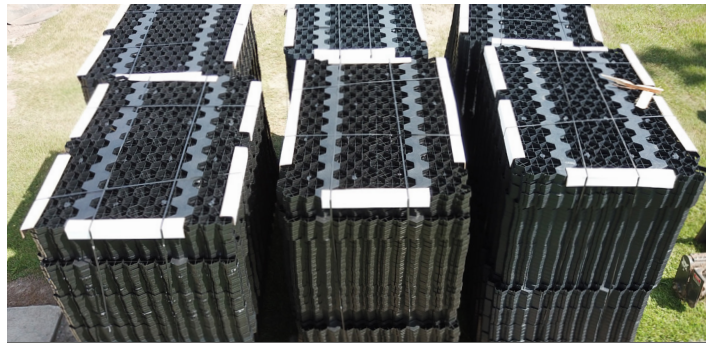


GeoBase® is a polyolefin structural grid designed to strengthen and enhance free poured concrete while offering superior flexibility and expansion/contraction capabilities.

The GeoBase system utilizes 2500 PSI concrete minimum with pea gravel or 1/2" minus stone and may consist of up to 30% flyash.



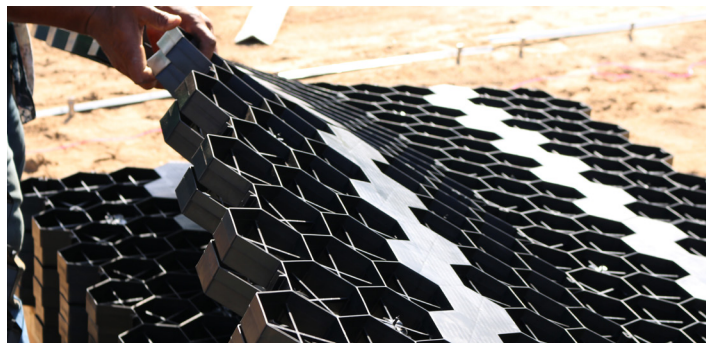
**MADE FROM RECYCLED MATERIALS**



**MANUFACTURED IN THE UNITED STATES**



**NORMAL SIZE: 4' X 6'**



**THICKNESS: 40mm**

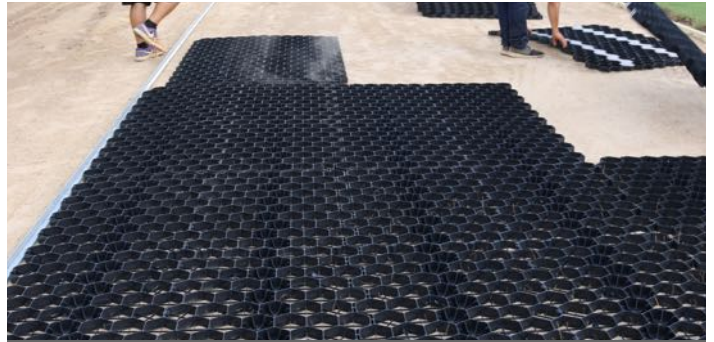




## GEOBASE® STRUCTURAL GRID INSTALLATION



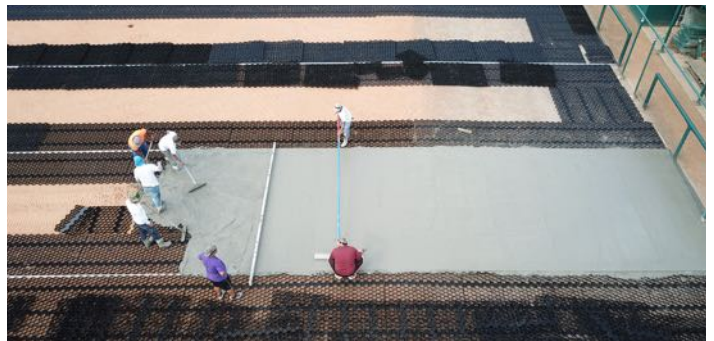
PLACEMENT OF STRUCTURAL GRID



PERFECT FIT BETWEEN PANELS



CONCRETE POURING OVER GRID



LESS OVERALL CONCRETE REQUIRED



SMOOTHING OF SURFACE



READY TO INSTALL TURF AFTER DRYING





## **"TURN KEY" SPORTS SURFACING**

GeoSurfaces is one of the few companies in the USA that offers in-house "turn key" sports lighting and sports surfacing. We are a licensed Professional Construction Firm, Electrical Firm, and Construction Manager that can offer complete construction and installation of FIFA, IAAF and ITF Approved Surfaces.